

The Minerva Hotel



ROBERT BARNARD

LOCAL HISTORY UNIT

HULL COLLEGE

The Minerva Hotel

Robert Barnard

Published by

**Local History Unit
Park Street Centre
Hull College
Park Street
Hull HU2 8RR**

October 1999

Minerva Hotel

Reclaimed Land

The first sale reference to the Minerva site is a bundle of documents in the Hull Records Office (BRD 96) and relates to the sale of 2142 sq. yds., the sites of 14-17 Pier Street, 33-37 Wellington Street, 3-8 Minerva Terrace and the Minerva Hotel, to William Westerdale of Sculcoates. All these transactions took place between 1813 and 1817.

In 1803 William Westerdale was a blockmaker, etc., North Side Dock, living in Savile Row (there is a painting showing Westerdale's Yard at the west end of the Old Dock). By 1817 Westerdale was a mast, block and pump maker, 1 Pier St. (later renumbered 17 Pier St.), with a shop at Old Dock West End. A painting of 1 Pier Street by Robert Willoughby is dated c. 1815 and it also appears, in the wrong place, on Anderson's Plan of Hull in 1814. Westerdale's 'garden' is mud; the site being reclaimed land created using material dug out constructing Humber Dock in 1803-1809. Westerdale died in 1837 aged 66. Thomas A Wilkinson took over his business and 1 Pier St.

Westerdale originally purchased the whole site for a total of £3190.6.8 after it had been divided into three lots:

- Lot 1. facing Wellington Street, purchased in 1813.
- Lot 2. facing Pier Street, purchased in 1814.
- Lot 3. facing Nelson Street (the Minerva site), purchased on 29/8/1815 for £1626.

The deeds transpose Pier and Nelson Streets but an inserted note clarifies the position. On 11/5/1813 the Bench (i.e. the Mayor and Aldermen) named the streets near Ferry Dock as follows: the street extending from Queen Street to the Humber Dock Bridge to be called Wellington Street, the street extending along the north side of Ferry Dock to be called Nelson Street, and the street extending from Humber Street to the west end of the Ferry Dock to be called Pier Street.

Lot 3 was land bounded on the south by Nelson Street, east by Pier Street, west by Dock Company ground, north land belonging to William Westerdale. The site extended in width from east to west on the north side thereof 92' 8" and at the south end 117' 6" and in length on the east side thereof 66' and on the west side 154' 6". The area contained 1084 sq. yds.

Development of the Site

The only building on Westerdale's site prior to 1817 was his dwelling house on the corner of Pier St. and Wellington St. [The only two listings for Wellington Street in the 1817 directory are, William Gilyott, Master mariner, 3 Wellington St. and William Walker, general merchant. Both Craggs and Anderson, 1817 and 1818, show three buildings on Wellington St., one on Westerdale's site, one next to the Theatre (No. 3?) and a building near the Humber Dock Bridge which Anderson labels as New Dock Office and Baines, 1823, shows as Humane Society Offices (later often referred to as Lock Keeper's Cottage, owned by the Dock Co., and it is probably the oldest building still standing in the area). Craggs shows an extra building on the corner of Wellington St. and the yet to be named Humber Place but it was actually opposite 1 Pier St. Anderson's plan is of 1814 and remained virtually unchanged when reissued in 1818, which could account for the discrepancy. Number 1 Pier Street is in

The Minerva Hotel

the 1817 directory but apparently not on either plan, however, both plans have misplaced the building on Wellington St./Pier St. south corner for Wellington St./Minerva Terrace corner and Wellington St./Pier St. north for Wellington St./Humber Place. The buildings were probably in the course of construction when the maps were drawn.]

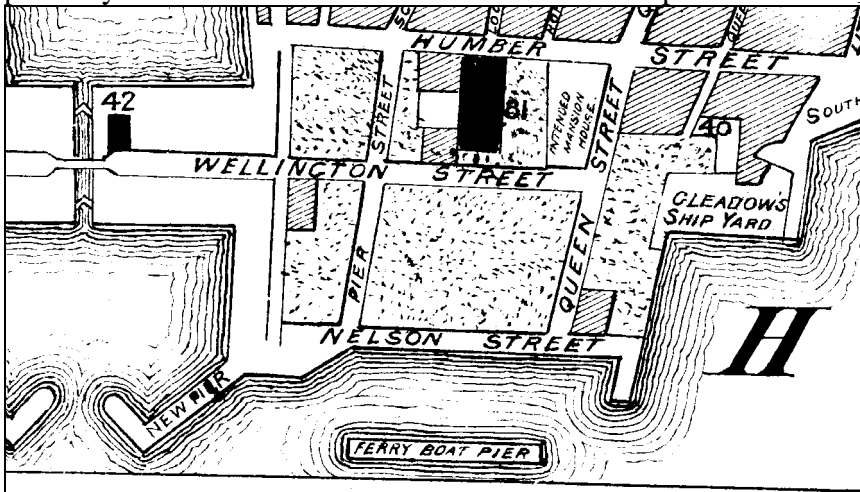


Figure 1 Anderson's Plan of Hull, 1818

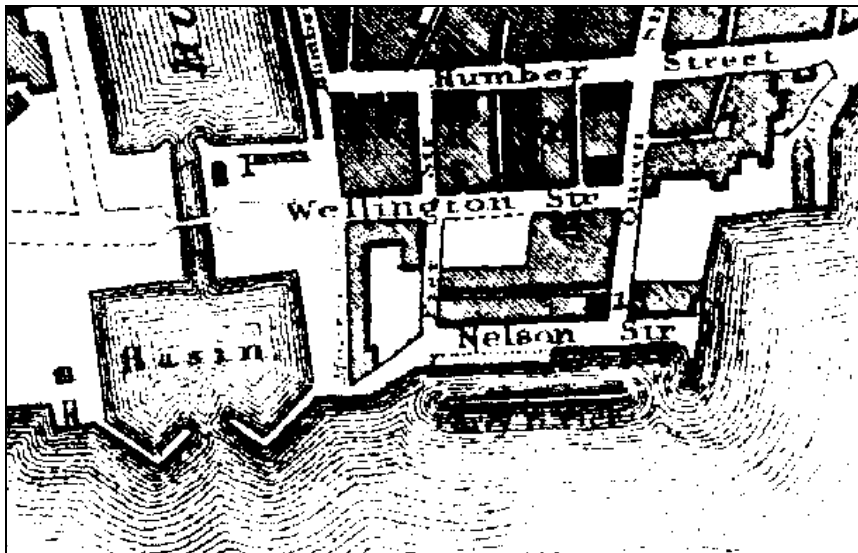


Figure 2 Greenwood's Plan of Hull, 1835

Minerva Terrace eventually became the name given to the street between Nelson St. and Wellington St. along the dock side (it is marked as such on Greenwood's plan of 1835). However, the section on Wellington St. corner had been built by 1823 (Baines' plan), probably as a warehouse (Westerdale is listed in the 1826 directory in Wellington St.; it is possible he had demolished the original extension to his house along Wellington St. and built a uniform block of three stories extending into 'Minerva Terrace' by then), but was not part of the later terrace of houses. Minerva Terrace, when originally built, comprised of only five houses, extending from halfway down the street

to Nelson St., all with small yards (except the Minerva Hotel), number one was twice the width of numbers two, three and four. The Minerva Hotel, originally occupying 5 Minerva Terrace, was built by January 1829 (its first victualler was still commanding the Hull-Hamburg steam packet in July 1828) as the following appeared in the Hull Rockingham of 24/1/1829:

"Minerva Hotel - R. Cortis - thanks public for support after opening his house - beds are newly fitted up for their accommodation. Good fires will be kept, and attendance given on early tides, to suit all Steam Packets. He has also laid in a stock of superior old wines, spirits, etc. Trusting from every attention to their comfort he will insure their future favors.

N. B. Post Chaises on the shortest notice."

The Minerva Hotel

The Hotel must have quickly established itself as the Hull Advertiser of 26/6/1829 announced that there was to be a “*Meeting to be held at Minerva Hotel on 1st July to establish Regatta*” - anyone with ideas for promoting aquatic amusements was invited to attend.

By February 1831 the Minerva had expanded into 4 Minerva Terrace according to the following advert from the Hull Packet of 15/2/1831:

“Minerva Hotel - R. Cortis - grateful for the many favours conferred on him by his friends and the public, begs leave to inform them that he has added the adjoining house to his establishment, and fitted it up with entire new beds, etc. His house being close to the landing of all the steam packets, renders it very desirable, and commanding an extensive view of the Humber. The Gainsbro’, Thorne, Goole, Selby, Barton, Grimsby, London, and Hambro’ Packets use his house. Also the Scarbro’ and Burlington coaches.”

In 1831 the occupants of Minerva Terrace were:

- 1 Samuel Simpson, joiner, dwelling house in Minerva Terrace.
- 2 John Broadhead, mariner.
- 3 Thomas Archer Wilkinson, bookkeeper. (This became Minerva Chambers by 1863)
- 4 Phineas Beaumont, wharfinger, shipping & commission agent.
- 5 Minerva Hotel.

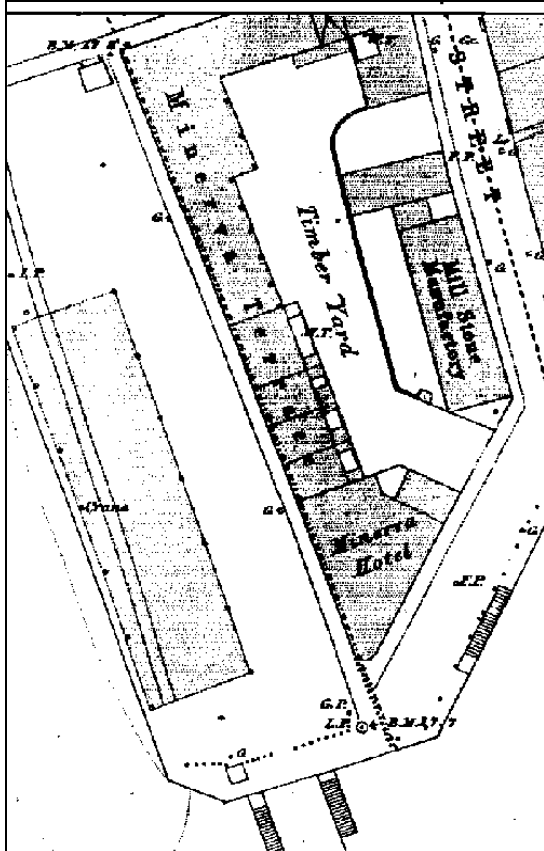


Figure 3 The Minerva site, 1853

The 1831 directory must have been slightly out of date when published. By 1838 the numbers had reversed with the Minerva being numbers one and two.

Moreland’s plan of 1834 (which is on display in Ferens Art Gallery) seems to be the first to show Minerva Terrace fully built, the Minerva Hotel is deeper than the middle range as is the ‘warehouse’ at the northern end of the street, the infill between No. 5 and the warehouse has also been built (probably between 1831 and 1834 but possibly earlier). The first pictorial record of the site is probably John Ward’s ‘The buoy yacht Zephyr (Hull from the Humber)’ of 1834/36, which is taken to be a relatively accurate and well drawn depiction of the buildings fronting the Humber and has often been reproduced, e.g. the front cover of ‘John Ward of Hull’, Ferens Art Gallery, 1981. The Hotel is shown as four bays wide fronting Nelson St., of red brick with entrance in second bay and a blocked up window above advertising the Hotel. The corner is rounded to fit its triangular site. The building

The Minerva Hotel

on the northern end of Pier St. (i.e. 1 Pier St., Westerdale's house) is a mirror image of the Hotel frontage. A high wooden fence, also present in the c. 1815 painting, runs along Pier St., joining the two buildings, and enclosing Westerdale's site, there is a gate immediately to the right of the Hotel. Some artistic license has been used to make the site appear triangular and symmetrical, the angle of Pier St. and Nelson St. is ignored completely. All the buildings on Westerdale's site are shown as three storied, which implies that the two storied extension to Westerdale's house along Wellington St., depicted in the c. 1815 painting, had been rebuilt. From Moreland's, and subsequent, plans the gable to the Minerva Hotel is roughly at 45° to Nelson St., however, Ward's painting depicts it as at 90°, again for artistic effect.



Figure 4 The Minerva with Minerva Terrace, c. 1980 (C J Ketchell)

and re-aligned at 90° to Nelson St., as has the chimney, the realignment necessitated the removal of the windows in the forth bay which was halved in width at the front. The extension is two bays in width with the windows to the left-hand side and the door to the right; it would have been a mirror image of the first two bays if windows had been inserted in



Figure 5 Pettingell's Plan of Hull, 1880

Goodwill & Lawson's plan of 1842 for Stephenson's directory shows no change to the above layout, nor does Wilkinson's 1848 plan, but by 1853, when the Ordnance Survey plan was produced, the Minerva has expanded along Nelson St. with an extension to the front and a smaller house, the Minerva Tap (later Vaults), adjoining. The Minerva Tap first appears in one of the directories for 1851 (Freebody's, but White's only lists the Hotel) with a separate victualler from the Hotel. Unfortunately the extension destroyed the symmetry of the frontage; the original gable appears to have been demolished

the second and third floors of the final bay. Due to the re-alignment the distance between the third and fourth windows is too large by half a bay. (There is also an odd building line above the right door, giving the unlikely impression that the new gable has been replaced at some

The Minerva Hotel

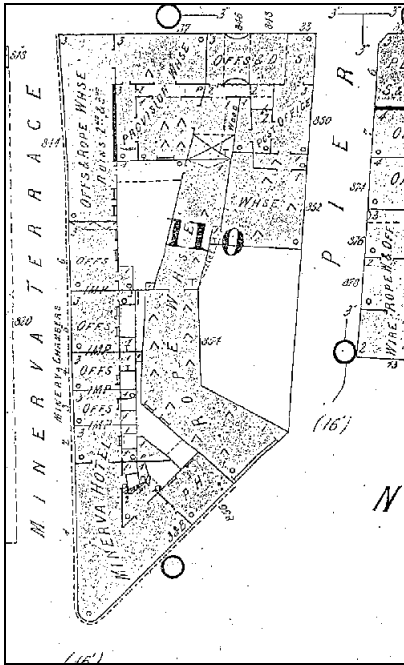


Figure 6 Goad's insurance plan, 1886

time; this could account for the lack of windows in the final bay.)

Minerva Terrace by 1846 contained six addresses. By 1857 there were seven addresses and by 1874 this had expanded to eight although the number of buildings remained unaltered from at least 1834. A Mill Stone Manufactory (W. J. & J. Childs) occupied most of the length of Pier St. between the Hotel and 1 Pier St. with a timber yard behind by 1853. Whittock's bird's eye plan of Hull, 1855, (on display in the Ferens) shows the new developments with the Minerva Vaults two storied (18' high, excluding the roof, according to a later plan of the stables). By 1886 the Manufactory site is empty but a single storied rope warehouse (Robert Hood Haggie & Son, hemp and wire ropemakers, were there in 1892 and well into this century) has been built behind it with an entrance on Nelson St. Also by 1886 the Pier St. side of Westerdale's former house is a post office and a single storied warehouse has been erected to its left (the small boathouse of the Kingston Rowing Club is sandwiched between the two

buildings); the Wellington St. part of the house is offices and a dwelling house with a 'shop' on the corner of Pier St. A small stable, nine foot high and occupying 24 sq. yds. (12' by 18'), had been built in 1857 adjoining the Tap but by 1886 it had been demolished and the Tap extended by one bay (or more probably rebuilt) to occupy the site.



Figure 7 The Minerva Brewery on the site of the Vaults

The Hotel has altered little externally since the c. 1850 extension but doorcases have been remodelled and the Vaults have been demolished to be replaced by the brewery. Most of the customers used the Vaults rather than the 'hotel' and until recently only the bar in the hotel was used regularly. The 'captain's room' was damaged in the blitz and not used until the '70s or '80s; it contained a painting depicting sailing ships as viewed through sloping ships windows and a central coke stove, also painted.

The Minerva underwent extensive internal restoration (designed by D H Craiggs of J Tetley and built by Jackson Contractors (Malton) Ltd.) when the brewhouse was incorporated and re-opened in February 1985. The brewpub was the fourth opened by Tetley and is the only one still in operation. CAMRA gave the 1986 Award for Refurbishment and Conservation to the Minerva and commented "*The pub complements its location very effectively and forms a popular focal point.*" The brewery closed early in 1994 but reopened in July 1995. However in 1999 the brewery permanently closed and is being converted into extra bar

The Minerva Hotel



Figure 8 Inside the Brewery, note original Minerva Sign

Richard's brother, William, also died in 1834 aged 64. By 1851 a Richard John Cortis is a commission merchant and emigration agent, Wellington St., living at 10 Nelson St. Charles Cortis was an emigration agent in 1854. By 1855 Cortis and Maples are seed and cake merchants, agents for the Nelson Assurance Company for baggage and sea passengers, Minerva Terrace.

RICHARD CORTIS,
MINERVA HOTEL,
MINERVA - TERRACE, WATERSIDE, HULL,
CLOSE TO THE STEAM PACKET LANDING.

Captains of the LONDON and FOREIGN STEAMERS use this Hotel,
where every Information can be obtained.

COACHES DAILY
TO AND FROM
SCARBRO', BURLINGTON & HORNSEA.
FRENCH AND GERMAN SPOKEN.

1842 Minerva Tap; J Day.

1851 Heseltine Sharpin, Minerva Hotel; John Atkin, Minerva Tap

accommodation. All the buildings on Westerdale's site were demolished, except the Hotel, in the mid 1980s and replaced with the houses of Henry Vernone Court.

The North Eastern Railway Co. had bought the Hotel by 1899. Linsley's became the first company to 'tie' the house after presumably buying it from N.E.R. Linsley's were taken over by Duncan Gilmour & Co., of Sheffield, who were in turn taken over by Tetley's, the present owners. The last recorded guest at the Hotel was a Polish airman at the end of the Second World War; unfortunately the Register was stolen in 1980.

Licenses

1831 Richard Cortis (advert in 1842 directory). Richard Cortis, master mariner, was the owner of the Hull registered ships, 'Elbe' and 'Minna', 1816-1824. In July 1828 Cortis was commander of the steam ship 'London', it had already made 5 voyages to Hamburg and was to be dispatched every 14 days from Hull with goods and passengers. By 1846 he was manager for the Gainsborough Steam Packet Co. as well as running the Hotel. Richard's wife, Jane, died in 1834 aged 43 leaving ten children, two of who were only six weeks old.

The Minerva Hotel

1854 John Hurst

1855 John Hurst (advert in directory).

MINERVA HOTEL, HULL.

J. HURST,

LATE COMMANDER OF THE STEAM SHIP "LION."

**This Hotel is most conveniently situated for Passengers to and from the Continent,
being close to the Steam Packet Landing Piers, commanding a fine
view of the Humber, Shipping, &c.**

1858 John Hurst, Hotel; J. Thorp, Tap

1861 John Hurst (Minerva Family Hotel.)

1868 Aug. William Wood

1879 William Loftus (advert in Hull Critic, 1883). Fined 20s and costs for supplying two men that were not lodgers or travellers at 4-15 p.m. on 15 April 1881, a Good Friday.

**THE PLEASANTEST HOUSE IN HULL IS THE
MINERVA HOTEL.**

**THE NELSON SMOKE ROOM facing the Nelson Avenue and
Promenade Pier, where the Band can be heard to perfection**

The OLD CARIN as of yore.

The MINERVA WHISKIES always good alike.

The MINERVA SMOKE is the Best in Hull.

The MINERVA DINNER on Saturday, at 1-30 p.m. FREE TABLE

W. LOFTUS. PROPRIETOR

1888 J. A. B. Henwood

1889 John & Mrs Ada Henwood (family & commercial hotel) ('Mrs' is probably an error, subsequent directories list 'Miss'. Ada is John's sister according to K. Daddy)

1892 John Henwood

1895 John & Miss Ada Henwood

1907 John A. Henwood

1913 Harold Ernest Harper

1915 Mrs Eleanor Harriet Walker

1919 Robert Sidney Elless

1925 John Joseph Griffin

1929 Walter H Roberts

1930 John Edwin Goodman

1939/40 George Beilby

1945 Jarvis and Edith Baker

1958 Edith Baker

1960 Edith Baker also Edith and Harold Beswick

1965 Edith Baker

1968 Doris Horth

1985 Geoffrey "Sammy" Lloyd

1988 John McCue

1994- Eamon & Kathy Scott

T. LINSLEY & CO. LTD.

Wine and Spirit Merchants

DAGGER LANE,

HULL.

TELEPHONE 36967

RETAIL PRICE LIST

CHRISTMAS 1954

We warrant our goods true to description, the highest grade in their class, our prices the lowest possible, compatible with quality.

T. Linsley & Co Ltd

The Minerva Hotel

PORTS

	Bottle	½-Bottle
Gilmour's Finest Ruby	18/-	9/6
Favell's "Old Cellar"	19/-	10/-
Favell's "Grandmaster Old Tawny"	20/-	—
Elizabethan Vintage Port	23/-	—

SHERRY

Pale Golden	18/-	9/6
Amontillado	19/-	—
Favell's Amontillado	20/-	—
Favell's Oloroso	20/-	10/6
Findlater's "Dry Fly"	20/-	10/6
Ancient Browne Rednutt	22/-	—
Tio Pepe	24/-	—
Monastery Cream	25/-	—

MARSALA

Woodhouse & Co. "Garibaldi" (Full Strength) ..	15/-	—
--	------	---

EMPIRE WINES

Australia

"Purple Grape" or "White Grape"	12/6	—
Emu "Imperial Bounty", Ruby or White	8/6	4/9
Emu 333, 444, 999	15/-	—
Emu "Sir John's" Sherry	15/-	—
Nicholson's "Black Swan" ****	14/6	—
Imperial Bond Sherry	10/-	—

South Africa

"Groot Vogel", White	10/-	—
------------------------------	------	---

EMPIRE DRY WINES

Keystone Burgundy, Red	Flagon 11/6*	5/9*
Harvest Burgundy, Red	Flagon 11/6*	5/9*

* Plus 6d. deposit on Flagon returnable.

BRITISH WINES

Finest Ruby—Port Character	10/3	—
Fine Rich Ruby or White—Port Character	9/9	5/4
Gilmour's Ruby or White—Port Character	6/-	3/6
Fine Golden Sherry	10/3	5/7
Gilmour's Sherry	8/-	4/3
Whiteway's Ruby	5/9	3/3
Whiteway's White	5/9	3/3
Whiteway's Brown Sherry	5/9	3/3
Splitlets, Ruby, White and Brown Sherry	1/-	—
Stone's Ginger and Raisin Wine	7/6	—
Schweppes Green Ginger Wine	7/-	—
Tent Wine	6/9	—

The Minerva Hotel

CHAMPAGNE		Vintage	Bottle	½-Bottle
Moët & Chandon Premiere Cuvée	N.V.	25/-	13/2
Moët & Chandon	1943	—	17/2
Moët & Chandon Dry Imperial	1947	35/-	18/2
Heidsieck Dry Monopole	1947	32/6	17/3
Heidsieck Dry Monopole	N.V.	26/6	14/6
Charles Heidsieck Extra Dry	1943	—	17/4
Piper Heidsieck Très Sec	1943	—	16/8
TROUILLARD & CIE, EPERNAY				
Grand Vin de Réserve, Ex. Dry	N.V.	23/-	12/-
Grand Vin de Réserve, Ex. Dry	1945	29/-	15/6
Grand Vin de Réserve, Ex. Dry	1947	27/6	14/6
Rosé, Ex. Dry, Pink Champagne	1947	25/-	13/-
SPARKLING WINES				
Golden Guinea, Sparkling Muscatel	21/-	11/-
Saumur Cordon D'Or	18/9	—
Mousséc Cuvée Nature	16/6	—
Mousséc Cuvée Nature	Quarter Bottle	4/4*	—
Mousséc Cuvée Nature	Baby	2/3*	—
* Plus 2d. deposit on Bottle returnable.				
CLARET				
St. Julien 1933	13/-	6/9
Chateau Margaux 1934	14/6	7/6
BORDEAUX WHITE				
Côtes de Bordeaux	11/6	—
Barsac 1945	13/6	—
Sauternes-Marquis de la Rose	10/6	—
Sauternes-la Marquise 1947	13/6	7/3
CHABLIS				
..	15/-	7/9
BURGUNDY				
Côte de Beaune, Réserve de l'Abbé	11/6	—
Pommard 1933	—	8/3
Pommard 1934	16/-	8/3
Pommard 1937	16/-	—
Nuits St. Georges 1947	16/-	—
VERMOUTHS				
Vamour, Sweet	8/-	—
Emu, "St. George" (Australian) Dry or Sweet	9/6	—
Votrix, Sweet (British)	10/-	—
Votrix, Dry (British)	12/6	—
Cinzano, Sweet Red (Italian)	Large Bottle	17/-	—
Cinzano, Sweet Red (Italian)	Miniature	1/4	—
Martini, Sweet (Italian)	Large Bottle	17/-	—
Martini, Dry (Italian)	Large Bottle	18/-	—
Noilly Prat (French)	Large Bottle	22/6	—
TONIC WINES				
Sanatogen	8/-	4/6
Phosferine	11/6	—
Vibrona	14/3	—
Wincarnis—Gold Label	15/6	8/3
Wincarnis—Red Label	10/6	5/9
Hall's Wine	13/6	7/3
Buckfast Tonic	15/-	8/-

The Minerva Hotel

SCOTCH WHISKY

	Bottle	½-Bottle	¼-Bottle	Miniature
Burns Blend	35/-	18/3	9/6	—
Glenlivet	35/-	18/3	9/6	—
Glen Rossie Special Reserve ..	35/-	18/3	9/6	—
Proprietary Brands	35/-	18/3	—	—
Old Bar	—	—	—	3/8

IRISH WHISKEY

Whites Club	35/-	18/3	—	—
Jameson's ***	35/-	—	—	—

RUM

Very Old Jamaica	35/4	18/5	—	—
"Golden Plover" Jamaica (Island bottled)	37/6	—	—	—
Favell's "London Dock" Demerara	35/4	18/5	—	—
"St. Crispin" Old Matured ..	35/4	18/5	9/6	3/6

GIN

White's Dry Club	33/3	17/4	9/-	3/6
Booths	33/9	17/7	9/2	3/7
Gordons	33/9	17/7	9/2	3/7
Gordons, Orange or Lemon ..	32/-	16/9	—	—
Nicholsons	33/9	17/7	—	—
Hollands—De Kuyper	37/-	19/-	—	—

BRANDY

Finest Pale French	47/6	24/3	—	—
Jules Delont & Cie***	52/6	26/9	—	—
Martell ***	44/-	22/9	11/9	3/6
Martell *** Small Flask	6/4	—	—	—
R.G.B. ***	42/-	21/6	—	—
Martell Cordon Bleu	57/6	—	—	—
Prince Hubert de Polignac *** ..	42/-	21/6	—	—

LIQUEURS

Advocaat (Vlek)	24/-	12/6	—	—
Advocaat (Schade & Buysing) ..	24/-	—	—	2/6
Advocaat (Wynand Fockink) ..	25/-	13/-	—	2/10
Advocaat (Warnink's)	26/-	13/6	7/3	—
Apricot Brandy (Schade & Buysing) ..	36/-	—	—	—
Apricot Brandy—(Cusenier)	—	—	—	4/5
Bénédictine D.O.M.	51/-	26/-	—	3/3
Chartreuse Green	66/-	33/6	—	4/5
Cherry Brandy (Schade & Buysing) ..	32/6	16/6	—	3/-
Cherry Brandy (Heering)	34/6	17/9	—	2/9
Cherry Liqueur (Wynand Fockink) ..	30/-	—	—	3/2
Cointreau	49/6	25/3	—	3/6
Crème de Menthe (Schade & Buysing)	32/-	—	—	—
Crème de Menthe (Wynand Fockink)	34/6	—	—	—
Crème de Menthe Glaciale (Freezomint) (Cusenier)	—	—	—	4/-
Curacao Orange (Cusenier)	—	—	—	5/-
Drambuie	47/6	25/-	—	—
Gayva, Scotch Liqueur	44/-	—	—	4/6
Grand Marnier	46/6	24/6	—	3/6
Kummel, Sec (Cusenier)	—	—	—	4/7
Liqueur d'Abriocot (Combiér)	36/-	18/6	—	3/-
Peach Brandy (Schade & Buysing) ..	34/-	—	—	3/-
Sloe Gin (Nicholsons)	32/-	—	—	—
Tia Maria (Jamaica)	39/6	20/6	—	3/-

The Minerva Hotel

BITTERS, APERITIFS AND CUPS

	Bottle	½-Bottle	Miniature
Angostura Bitters	—	20/6	6/-
Orange Bitters	32/6	16/9	—
Dubonnet Large Bottle	20/-	—	—
Lillet	20/-	—	—
Pimm's No. 1 Cup (Gin Sling) ..	33/9	—	—
Pimm's No. 2 Cup (Whisky Sling) ..	37/-	—	—

COCKTAILS

	Bottle	½-Bottle
Gordons Spirit Cocktails	21/-	—
Green Goddess	17/6	9/3
Shag	17/6	—
Maldano's Damson Cream	17/6	9/3
Maldano's Late Night Final	16/6	8/9
Maldano's Egg Flip	17/6	9/3

SUNDRIES

	Bottle	½-Bottle	Split	Baby
Black Beer	8/6	—	—	—
Goldwell, Champagne Perry, Doyenne	10/6	—	—	—
Goldwell, Champagne Perry, Baby Bubbly	1/3*	—	—	—
Cocktail Cherries, Rayner's, 7 oz.	3/6	—	—	—
Rose's Lime Juice Cordial	3/6	—	—	—
Rose's Orange Squash	3/-	—	—	—
Schwepes Squashes	3/-	—	—	—
Schwepes Peppermint, Ginger Wine	2/9	—	—	—
Schwepes Pineapple, Tomato Juice	1/-*	—	—	—
Schwepes Minerals	7½d.*	6d.*	4½d.*	—
Kia-Ora Squashes	—	—	—	3/-
Robinson's Barley Water, Orange or Lemon	—	—	—	3/-
Lucozade	—	—	—	2/6†
Lucozade (Small)	—	—	—	8d.*
Babycham, Cherapear	—	—	—	1/3*

* Plus 2d. deposit on Bottle returnable.
 † Plus 3d. deposit on Bottle returnable.

BOTTLED BEERS, STOUTS, Etc.

	Bottle	½-Bottle
Tetley's Bitter Ale	1/8	11d.
Tetley's Family Ale	1/4	9d.
Tetley's Yorkshire Pale Ale	—	1/3
Tetley's Special Ale	—	1/4
Tetley's Imperial Barley Wine	—	(Nip) 1/6
Gilmour's Sheffield Shield	—	(Nip) 1/-
Gilmour's Golden Pale Ale	1/4½	9d.
Gilmour's Extra Stout	1/10	1/-
Guinness	2/-	1/1
Bass Blue, Red	—	1/2
Worthington White, Green	—	1/2
Worthington Green	—	(Nip) 11½d.
Carlsberg & Tuborg Lager	—	1/6
Cider—Gaymers, Bulmers, Whiteways (Large Flagon)	1/8	7d.
		(Nip) 6d.

Deposit on Bottle 3d. and on Cider Flagon 4d. each returnable.

ALL PRICES ARE SUBJECT TO REVISION WITHOUT NOTICE

The Minerva Hotel

BRANCHES IN HULL

	Tel. No
177 ANLABY ROAD	15991
960 ANLABY ROAD	53124
ABERCROMBIE, Campbell Street	11067
BURNS HEAD, Waterloo Street	11795
CLARENDON HOTEL, Londesborough Street	169951
COMMERCIAL HOTEL, Castle Street	—
THE CLARENCE, Charles Street	35552
DRUMMERS ARMS, Adelaide Street	36295
EAST RIDING HOTEL, Cannon Street	33134
65 FOUNTAIN ROAD	17380
184 GILLSHILL ROAD	31852
GIPIYVILLE TAVERN, Gipsyville	37196
GARDENERS ARMS, Cottingham Road	165691
136 HESSLE ROAD	37568
103 HOLDERNESS ROAD	33521
628 HOLDERNESS ROAD	14400
KINGSTON NEW INN, Hopwood Street	35182
LORD NELSON HOTEL, Gt. Union Street	—
NEW INN, Marfleet	169911
MINERVA HOTEL, Nelson Street	169091
NAVIGATION INN, Blanket Row	15805
OLD BLACK BOY, High Street	165161
18-20 PARK ROAD	35564
49-51 ROSAMOND STREET	38601
ROYAL SOVEREIGN, North Dock Walls	36534
THE ROYAL, New Bridge Road	32541
SHIP INN, Drypool	12732
SHIP INN, Sutton	—
SLATERS ARMS, West Parade	12597
SOCIETY TAVERN, Dagger Lane	12077
STATION INN, Beverley Road (Stepney)	19500
STAR & GARTER, Portland Street	12356
60 WELLINGTON LANE	36942
THE WELLINGTON, Peel Street	11197
WHALEBONE INN, Wincolmlee	34057
28 WOODCOCK STREET	58609

BRANCHES IN E. RIDING & N. Lincs.

	Tel. No
129 BEVERLEY ROAD, Hessle	40046
BLACK SWAN, Beeford	—
BLACK HORSE, Roos	—
BURNS HEAD, Patrington	Pat. 245
CROSS KEYS, Cottingham	45156
COLLEGE ARMS, Bielby	—
CROOKED BILLET, Ryhill	—
GEORGE & DRAGON, Holmpton	—
GOLDEN BALL, Fisting	—
HARE & HOUNDS, Leven	Leven 207
94 HULL ROAD, Hessle	40012
KINGS ARMS, Tunstall	—
KINGS ARMS, Newport	—
MARINE HOTEL, Hornsea	Hornsea 183
NANCY INN, Burton Fidses	—
PACK HORSE, Hutson Cranswick	—
PLOUGH INN, Hollym	Withernsea 589
SHIP INN, Keyingham	—
STATION HOTEL, Brough	Brough 135
STATION REFRESHMENT ROOMS, Driffield	Driffield 2355
VALIANT SOLDIER, Beverley	Beverley 652
WHITE HORSE INN, Easington	Spurn Point 248
WRY GARTH INN, Hatfield	Siggleshorne 262
COACH & HORSES, Barton-on-Humber	—
SIX BELLS, Barrow-on-Humber	Barrow 278